



**Standardized
Testing**

&

**Sending
Important
Documents**

&

**Application
Components**

Agenda for SAT/ACT & More

- Standardized Testing
- Sending Important Documents
- Application Components
- Questions?



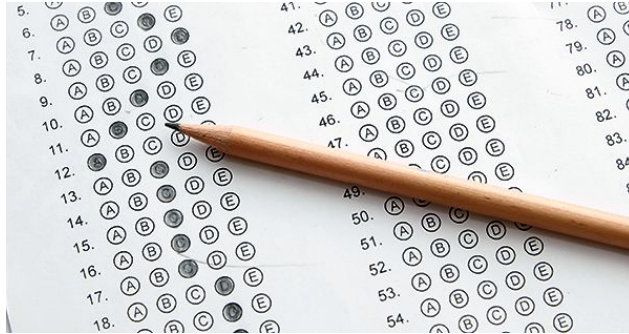
Standardized Testing

SAT vs ACT-Components of Testing

SAT

Reading
Math
Writing

*Essay section has been
discontinued as of June 2021



ACT

Reading
Math
English
Science Reasoning

*Essay Option

SAT vs ACT-Breakdown of Content

SAT

5 reading passages
Calculator active and inactive
SAT questions tend to be more tricky and can take time to analyze and answer

More time per question



ACT

4 reading passages
Science section tests on critical thinking skills not content
All math sections use calculator
Questions tend to be more straightforward.

Less time per question (faster paced)

ACT vs SAT-Score and Scoring Information

SAT

400-1600 Scale
Math is 200-800 Scale
Reading/Writing (Evidence Based
Reading and Writing) is Combined
to form 200-800

Both

Both tests award +1 for correct answers and no points (+/- 0) for incorrect answers.

Offer SuperScoring (the best subscore of each test will be added together to create your best highest score)

ACT

1-36 Scale
Scores from the 4 sections are averaged together for overall score
Each section is given a subscore

Which one should I take again?

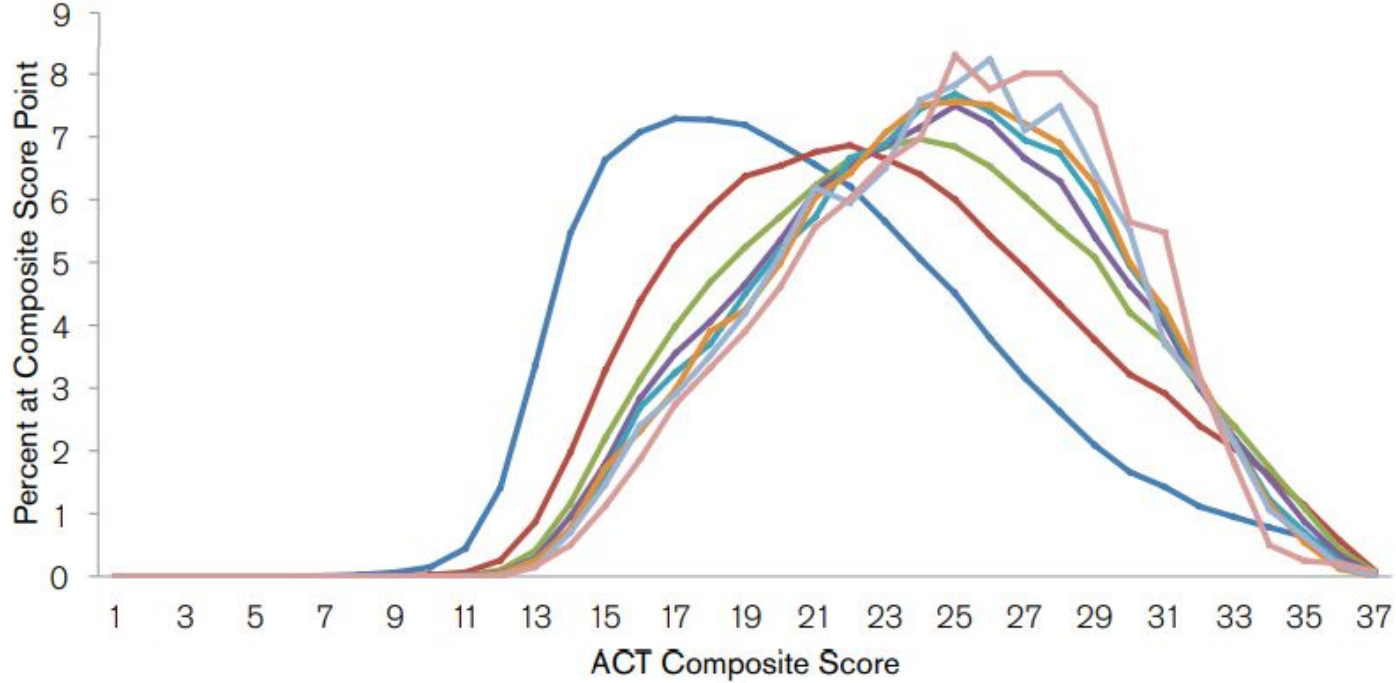
SAT

Studies show an average of 15 point increase on a 2nd test attempt.

ACT

50% of students show a score increase on a 2nd test attempt.





— One Test — Two Tests — Three Tests — Four Tests
 — Five Tests — Six Tests — Seven Tests — Eight Tests

*Times tested was truncated above 8 because N-counts dipped below 1000

SAT	ACT	SAT	ACT	SAT	ACT
1600	36	1250	26	910	16
*1590	36	*1240	26	900	16
1580	36	1230	26	*890	16
1570	36	1220	25	880	16
1560	35	*1210	25	870	15
1550	35	1200	25	860	15
*1540	35	1190	24	*850	15
1530	35	*1180	24	840	15
1520	34	1170	24	830	15
1510	34	1160	24	820	14
*1500	34	1150	23	810	14
1490	34	*1140	23	*800	14
1480	33	1130	23	790	14
1470	33	1120	22	780	14
*1460	33	*1110	22	770	13
1450	33	1100	22	*760	13
1440	32	1090	21	750	13
*1430	32	*1080	21	740	13
1420	32	1070	21	730	13
1410	31	1060	21	720	12
*1400	31	1050	20	*710	12
1390	31	*1040	20	700	12
1380	30	1030	20	690	12
*1370	30	1020	19	680	11
1360	30	*1010	19	*670	11
1350	29	1000	19	660	11
*1340	29	990	19	650	11
1330	29	980	18	640	10

ACT	SAT	SAT Range
36	1590	1570-1600
35	1540	1530-1560
34	1500	1490-1520
33	1460	1450-1480
32	1430	1420-1440
31	1400	1390-1410
30	1370	1360-1380
29	1340	1330-1350
28	1310	1300-1320
27	1280	1260-1290
26	1240	1230-1250
25	1210	1200-1220
24	1180	1160-1190
23	1140	1130-1150
22	1110	1100-1120
21	1080	1060-1090
20	1040	1030-1050
19	1010	990-1020
18	970	960-980
17	930	920-950
16	890	880-910
15	850	830-870
14	800	780-820
13	760	730-770
12	710	690-720
11	670	650-680
10	630	620-640
9	590	590-610



Sending Important Documents

Sending a Transcript

Scrib Online

Send transcripts through WCPSS.
Can be send to any entity of choice (out of state college, Scholarship, NCAA, etc.)

Free to Send on ScribOrder for current WCPSS students

Unofficial and Official Transcripts

Resource:

<https://wcpss.scriborder.com/>

CommonApp

Your high school counselor uploads a transcript on your behalf that is then downloaded by the colleges you've applied to.

Resource:

<https://www.commonapp.org/>

CFNC

Send transcripts electronically to any college or university in North Carolina.

Always free to send through CFNC

Resource:

<https://www.cfnc.org/>

CFNC Transcript



Should I Send my Test Scores?

Test Optional

A wide variety of schools have indicated they will remain test optional through this application cycle (including the UNC System).

This means test scores are not required for a complete application.

Use previous years averages to determine if you should send your score-if your score is above their average standards it is a good indicator to include your scores.

VS

Test Blind

Test scores are NOT REQUIRED nor INCLUDED as part of the application.

Sending Test Scores

CollegeBoard

Send scores to up to 4 colleges for FREE when you register for SAT and up to 9 days after the test.

Send via website later for \$12

Each score report contains all SAT scores for superscoring.

Resource:
collegeboard.org

ACT

Send scores to up to 4 colleges for FREE when you register for the ACT.

Send via the website later for \$16 each.

Have to send score report from each test session if superscoring.

Resource:
actstudent.org

AP

Send 1 FREE report when you set up account.

Send via the website later for \$15 each.

Score report contains all AP Scores.

Send to school you are enrolling in for college course credit and placement.

Resource:
collegeboard.org

How to Send ACT Scores

The screenshot displays the ACT Student Web Services interface. At the top, the user is logged in as ELIZABETH KSLATI (kslati@gmail.com) with a 'Log Out' button. The main heading is 'Send Your Scores'. Below this, it shows 'Your Test Date: February 2009' and 'Your Test Option: The ACT with writing'. The 'Your Test Location' is listed as 'National'. A message states: 'You previously requested that scores for this test date be sent to:'. Underneath, a list of institutions is provided under the heading 'Score Reports Selected at Time of Registration or Testing':

- 2092 CARLETON COLLEGE, NORTHFIELD, MN, US
- 4240 UNIV OF TEXAS AUSTIN, AUSTIN, TX, US
- 2754 HAMILTON COLLEGE, CLYTON, NY, US
- 4902 BAYLOR UNIVERSITY, WACO, TX, US

A link for 'Addressed Score Request' is visible. Below the list, it says 'Score Report sent to High School' and lists '449073 ELDER HIGH SCHOOL, HOUSTON, TX, US'. At the bottom of the main content area, there are two buttons: 'Continue with Score Report Request' and 'Exit Score Report Choices'. The footer contains copyright information: '© 2018 by ACT, Inc. Terms of Use and Privacy Policy' and links for 'ACT Student Site' and 'Contact Us'. A 'SCREENCAST BY MATIC' watermark is present in the bottom left corner.

How to Send SAT Scores

The screenshot shows the SAT score reporting interface for University North Carolina Charlotte. The page is titled "Selected Scores for UNIVERSITY NORTH CAROLINA CHARLOTTE". A yellow banner indicates that the user has selected to send all scores. Below this, a table displays the user's best evidence-based scores for Reading & Writing and Math. The table shows scores of 130 for Reading & Writing and 130 for Math, both achieved on the SAT Test administered on December 11, 2014. The interface also includes sections for "Your SAT Subject Test Scores" and "Send Your Scores" buttons.

Test & Date	Evidence-Based Reading & Writing	Math
The SAT Test December 11, 2014	130	130



Application Components

Application Platforms

Common App

- Commonapp.org
- App for phones now
- 915 participating colleges
- All use same platform only essay and supplemental questions are different
- Application fee for application

*recommended to use website for full use of components and features

CFNC

- Cfnc.org
- NC Colleges, Community Colleges, and Universities
- Same application for each college (typically no supplemental questions)
- Application fee for each application
- Send Electronic Transcripts
- Includes Practice Applications
- College Application Week (FREE TO APPLY OCTOBER 17-21)

Coalition

- Coalitionforaccess.org
- 6 participating colleges in NC
- 1 application for multiple colleges

Common Black College App

- Used for HBCUs across the US
- Commonblackapp.org
- \$20 application for up to 67 HBCUs

Components Overview

Profile/Family Info

- Personal Info
- Demographics
- Language
- Citizenship
- Household/parent information

Testing

- Official score reports from SAT/ACT/CollegeBoard AP

Activities

- Arts or Music
- Clubs/Community Engagement
- Family Responsibilities
- Hobbies/Sports
- Work/Volunteering
- Other meaningful experiences

Activites

- High school information
- Current courses
- College courses
- GPA/Rank

Essays

- Personal statement
- Essay Options
- Short Questions

Essays

Hook

Give the admissions officer a reason to keep reading

Narrow

Keep your focus narrow

Personal

Be YOURSELF, keep it personal

Specific

Be specific with examples, details and stories

Extra-Curricular Activities

Not using your space wisely

- "Member of varsity soccer team for 3 years"
- "Member of national honor society for 2 years"
- "Worked as hostess at Olive Garden"

VS

Using your space wisely

- "Attend practice and workouts 4x/week. As a captain, I led the warmups, communicated game plays, and assisted with tryouts"
- "Completed 15 hours of community serviced at local animal shelter assisting with pet adoptions and veterinary care during COVID-19"
- "Greeted customers, organized seating chart to maximize use of servers, responded to incoming phone calls, and assisted with take out orders"

Recommendation Types

Counselor Recommendation

- Completed by your academic counselor
- Overview of who you are as a student
- Overview of school
- Guided form
- Often required for college applications and Scholarships
- Includes a School Profile and upload of Transcript

VS

Teacher Recommendation

- Completed by teacher who can best speak to your abilities
- Not necessarily the teacher who you earned an "A" with but the teacher who can best speak to your abilities
 - maybe you contributed to class discussions, lead activities, participated in extracurriculars, or worked hard to master the subject area
- Often required for college applications and scholarships

Questions?

HAMILTON ROBERTS
Dean of Students

Dept Chair, AP Coordinator | hroberts3@wcpss.net

WHITLEY FOWLER
SAP Counselor

At-Risk | wfowler@wcpss.net

EMILY SIMPSON
School Counselor

A - DEV | emsimpson@wcpss.net

MAYRA GARCIA
School Counselor

DEW - KAP | mgarcia2@wcpss.net

AMIE GRAHAM
School Counselor

KAR - NAG | agraham4@wcpss.net

JESSICA BATISTE
School Counselor

NAI - SEY | jcbatiste@wcpss.net

AUDREY CARLYLE
School Counselor

SHA - Z | acarlyle2@wcpss.net